

# Creative Set Beaded Flowers

Instructions No. 626



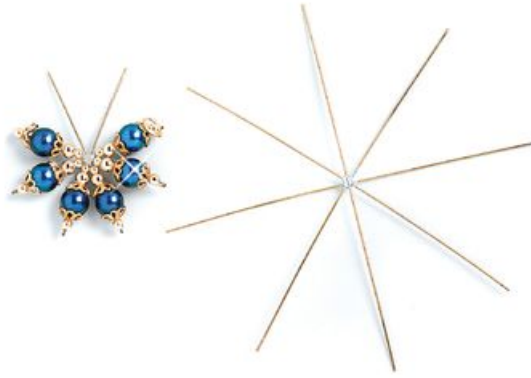
e with the jewellery pliers.

the eyelet of the first bead wire and connect it with

or glue them together.

attach a brooch pin to the back of the pearl flower

Must Have



VBS Wire forms "Star", Ø 5 cm

1,59 €

[Item details](#)

Quantity:

1

[Add to shopping cart](#)

#### Article information:

Article number	Article name	Qty
641241-20	Rocailles "Silverline"Golden yellow	1
640879	VBS Wire forms "Star", Ø 5 cm	1
970044	VBS Jewellery pliers	1
970020	VBS Side cutter	1
415712-80	Organza ribbon, 3 mmWhite	1
871013-02	Brooch pin, 10 piecesSilver coloured	1