

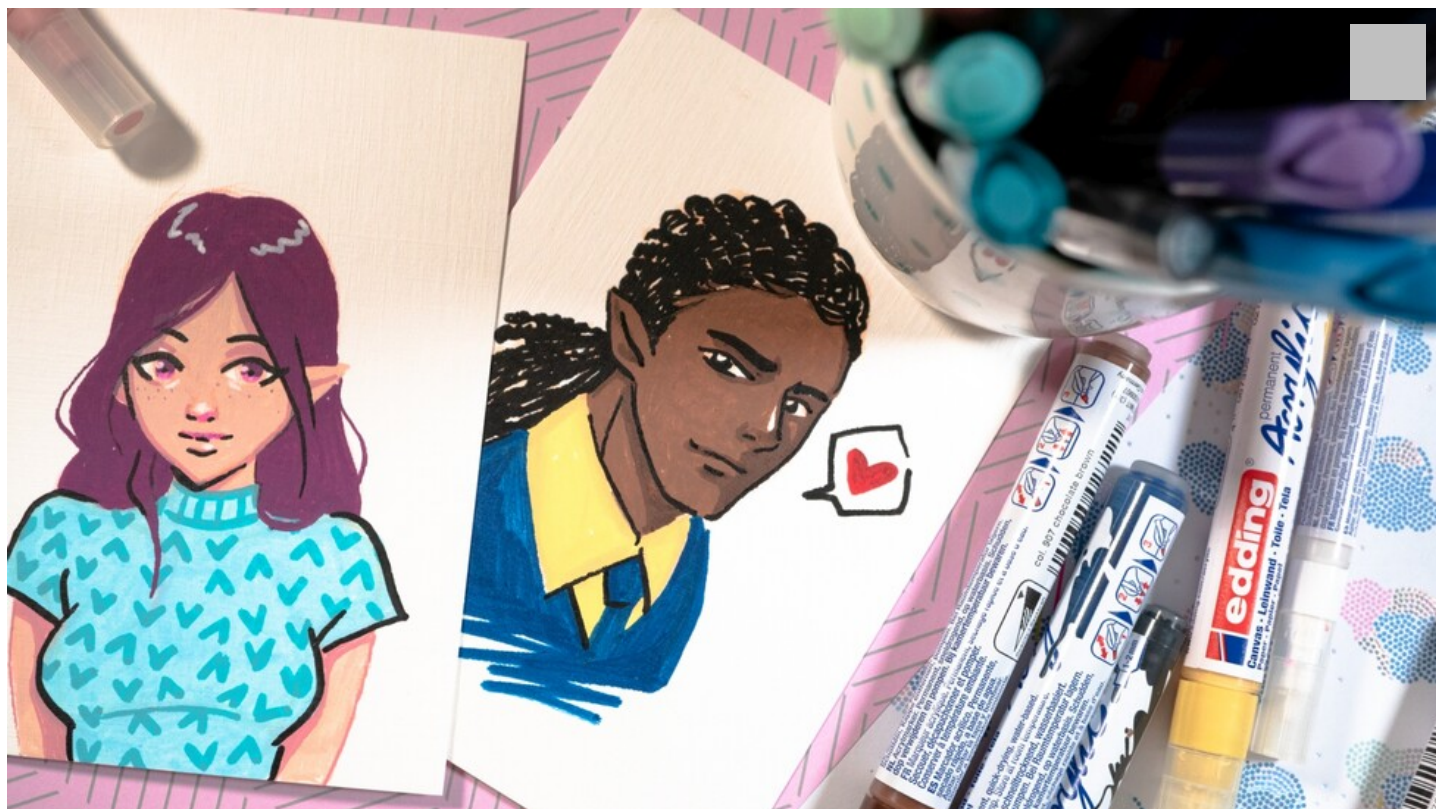
# Create your own mangas

Instructions No. 2863

Difficulty: Beginner

Working time: 3 Hours

Do you want to paint manga or anime characters? It's not that difficult, we'll show you how to do it step by step. Particularly important are the large eyes that characterise all mangas and reflect the emotions of the respective character. With edding acrylic markers and fibre-tip pens, you'll have just the right "tools" at hand to create great pictures. At the same time, you'll also find the right paper here - the edding acrylic and oil painting pad. It is perfectly matched to the specific properties of the acrylic markers and has very good absorbency.







**New instructions  
every week directly  
in your inbox**

[Register now >](#)



**New instructions  
every week directly  
in your inbox**

[Register now >](#)

